

**SAFETY
FIRST**

When the Environment Demands a Slip Resisting Floor

UNGLAZED QUARRY TILE

- Extreme Durability
- Added Slip Resistance
- Resists Thermal Shock



METROPOLITAN[®]
C E R A M I C S

Ironrock Since 1866

METROCERAMICS.COM

For Areas Subject to
Spills and Moisture

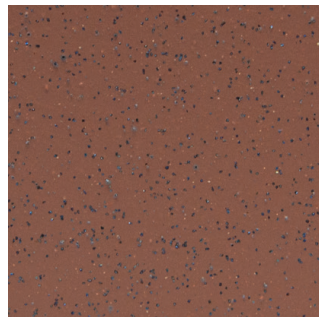


The Right Choice for Demanding Areas

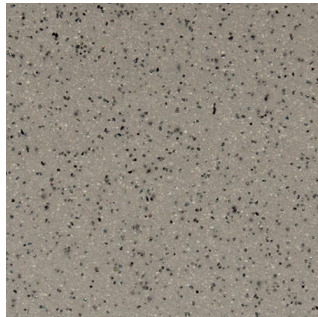
UNGLAZED CERAMIC QUARRY TILE



QuarryBasics® XA-Abrasive
Two Slip Resisting Additives



31XA Mayflower Red



57XA Puritan Gray

More Protection for Your Floor In ONE Tile

XA-Abrasive combines two slip resisting additives to create a one-of-a-kind slip resisting tile with a Dynamic Coefficient of Friction ≥ 0.70 .

With XA-Abrasive, the properties of both Quarrybasics® X-Colors and Quarrybasics® Abrasive are incorporated into one tile. The silicon embedded surface, combined with the metallic additive through the body of the tile, work together to combat the effects of spills, moisture, extreme temperatures and heavy traffic.

Use Quarry Basics® XA-Abrasive in the most demanding environments and anywhere durability and slip resistance are important.

Available Sizes 4"x 8" 6"x 6" 8"x 8"

31XA Mayflower Red	-	✓	✓
57XA Puritan Gray	-	✓	✓



XA-abrasive
TWO Additives in One SLIP RESISTING Tile

Please Note: Colors are as accurate as printed representations can be. For final color selection refer to current actual color samples.

EXTREME DURABILITY • ADDED SLIP RESISTANCE

METRO TREAD®

Raised Treads Tile



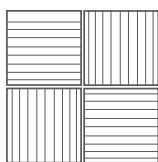
75T Pewter
(Premium Color)

Raised Treads Add Slip Resistance

**Available in
6" x 6" Size**

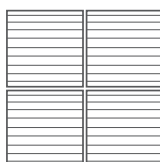
NOTE: METRO TREAD® must be installed in one of two patterns depending on the application.

METRO TREAD® features nine raised treads across the surface of each tile and spaced 5/8" apart for added slip resistance. METRO TREAD® is a popular choice for commercial kitchens and anywhere slip resistance is an issue.



Grid Pattern

For use in multi-directional traffic such as commercial kitchens.



Linear Pattern

When traffic flows across the tread such as in a hallway or ramp.

Down To Earth®

Flashed/Textured Tile

Down To Earth® paver tiles offer rich natural color variation, detailed textures, and a classic shape. Down to Earth can be used in both traditional and contemporary settings. Use a contrasting grout color to enhance the appearance of the textured surface. Use a similar grout color to minimize the texture's appearance.



155 Cobblestone



255 Desert Floor



350 Red Paver



458 Bedrock

**Available in nominal
4" x 8" Size**

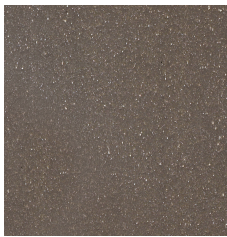
**SAFETY
FIRST**

The Right Choice for Demanding Areas

UNGLAZED CERAMIC QUARRY TILE

QuarryBasics®

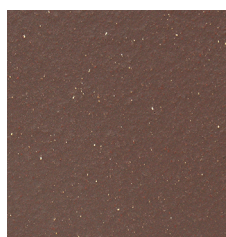
Unglazed Quarry Tile



705 Pewter
(Premium Color)



710 Raven
(Premium Color)



108 Chestnut Brown

QuarryBasics®

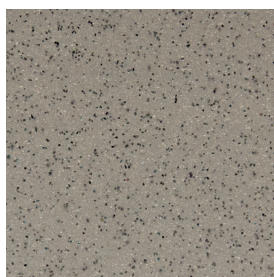
unglazed ceramic quarry tile offers the combination of long wear and great looking colors and shapes. The colors coordinate to fit high traffic multi-use commercial and residential design needs. Low absorption allows for interior and exterior applications.

Available Sizes 4"x 8" 6"x 6" 8"x 8"

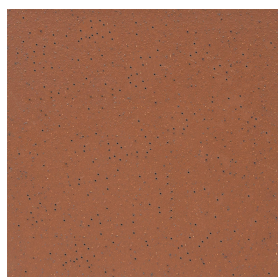
108 Chestnut Brown	-	✓	-
705 Pewter	-	✓	-
710 Raven	✓	✓	✓

QUARRYBASICS® IRONSPOT

Quarry Tile with Speckling



57IS Puritan Gray
Ironspot



31IS Mayflower Red
Ironspot

QuarryBasics® Ironspot

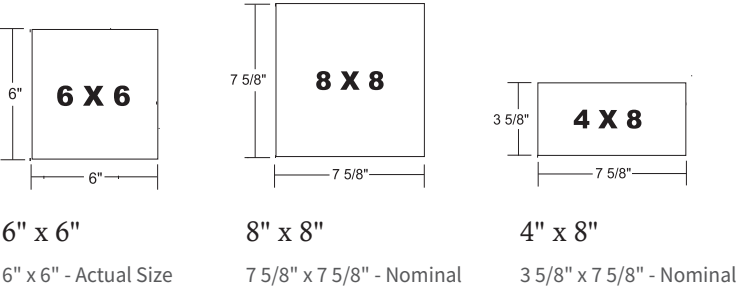
Metropolitan Ceramics 57IS Puritan Gray Ironspot and 31IS Mayflower Red Ironspot are ideal for demanding areas like kitchens, entryways and patios, as they can withstand heavy foot traffic and extreme weather conditions.

Both Ironspot colors are made from high-quality clay and shale, ensuring their durability and longevity. Plus, enhanced slip resistance provides added safety for employees and customers.

Available in 6" x 6" Size

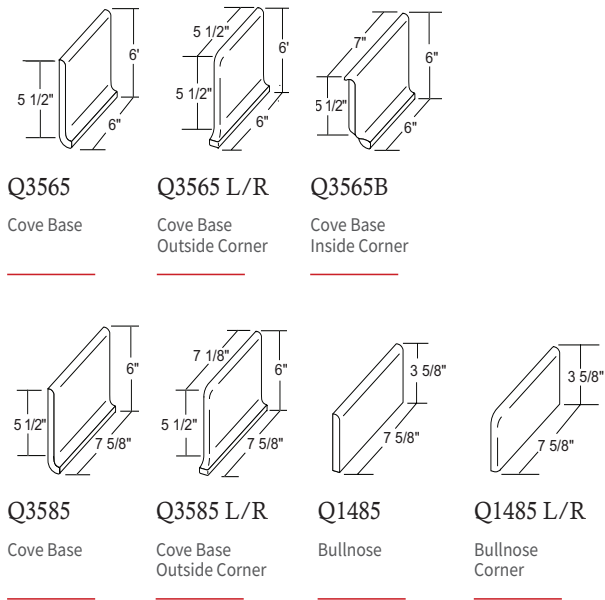
Available Sizes

All sizes are 1/2" thick. See chart for availability details.



Available Trim

Trim is available in corresponding QuarryBasics® and Ironspot colors. XA Abrasive uses Ironspot trim.



Colors & Sizes	4"x 8"	6"x 6"	8"x 8"
QuarryBasics® (Corresponding Smooth trim available)			
108 Chestnut Brown	-	✓	-
705 Pewter (Premium Color)	-	✓(NEW)	-
710 Raven (Premium Color)	✓	✓	✓
QuarryBasics® Ironspot (Corresponding Ironspot trim available)			
31IS Mayflower Red	-	✓(NEW)	-
57IS Puritan Gray	-	✓(NEW)	-
QuarryBasics® XA-Abrasive (Corresponding Ironspot trim available)			
31XA Mayflower Red	-	✓	✓
57XA Puritan Gray	-	✓	✓
METRO TREAD® (Corresponding Smooth trim available)			
75T Pewter (Premium Color)	-	✓(NEW)	-
Down To Earth® (No corresponding trim available)			
155 Cobblestone	✓	-	-
255 Desert Floor	✓	-	-
350 Red Paver	✓	-	-
458 Bedrock	✓	-	-

Shade Variation

QuarryBasics®

V1 | Minimal Shade Variation

QuarryBasics® Ironspot

V1 | Minimal Shade Variation

QuarryBasics® XA-Abrasive

V1 | Minimal Shade Variation

METRO TREAD®

V1 | Minimal Shade Variation

Down To Earth®

V3 | Moderate Shade Variation



The Right Choice for Demanding Areas

UNGLAZED CERAMIC QUARRY TILE

Green Squared Certified



Metropolitan Ceramics is your source for Green Squared Certified ceramic quarry tile and thin brick. Ironrock, maker of Metropolitan Ceramics quarry tile, METROBRICK thin brick, and Royal Thin Brick, has gone through the certification process with SCS – Scientific Certification Systems – and has obtained Green Squared Certification for all products.

This means that Ironrock has met the certification criteria in all categories, including environmental product characteristics, environmental product manufacturing /raw material extraction, end of product life management, progressive corporate governance and innovation. Part of the certification includes certified products; all Metropolitan Ceramics quarry tile and thin brick products are Green Squared Certified.

Metropolitan Ceramics® & LEED V4

Ironrock has been a member of the United States Green Building Council (USGBC) since September 2006. We are dedicated to manufacturing products that fit the requirements of LEED V4. See metroceramics.com for a complete overview of Metropolitan Ceramics and LEED.

Environmental Impact & Stewardship

Ironrock is committed to providing our customers with sustainable products while keeping with the company's commitment to good stewardship toward the environment and our community. This page gives more insight into the steps we are taking to save resources and energy in the manufacture of Metropolitan Ceramics' quarry tile and thin brick products.

We will also look at the positive environmental impact Metropolitan Ceramics' quarry tile products have once installed, for the life of their use and beyond. We will look at testing for durability, product life cycle, indoor air quality and recycled content.

Cleaning & Maintenance

The secret to a successful tile maintenance program is to begin with a clean surface. It should be the responsibility of the tile installer to thoroughly clean and remove all the grout residue and the dulling film inherent in the installation process. After initial clean up, a period of 28 days should be allowed for proper curing and maximum grout hardness. Prior to this period, it is recommended that the installer mop the floor with a temporary coating solution of a neutral chemical cleaner in a ratio of one part cleaner to one part water. Neutral chemical cleaners both clean and enhance the natural soil-resisting character of Metropolitan Ceramics unglazed quarry tile. See our web site for complete downloadable cleaning and maintenance information.

Recycled Content

The following chart contains percentages of pre-consumer recycled material in Metropolitan Ceramics products.

QuarryBasics®

#108 Chestnut Brown	18%
#705 Pewter	23%
#710 Raven	22%

QuarryBasics® Ironspot

#31IS Mayflower Red	18%
#57IS Puritan Gray	23%

QuarryBasics® XA Abrasive

#31XA Mayflower Red	18%
#57XA Puritan Gray	23%

METRO TREAD®

#75T Pewter	23%
-------------	-----

Down to Earth®

#350 Red Paver	18%
#458 Bedrock	23%
#155 Cobblestone	23%
#255 Desert Floor	19%

Note: Percentages based on most current data.

Installation & Specification

A typical specification to assure the use of Metropolitan Ceramics' unglazed tile on your next job should be written as follows: Ceramic tile shall be, QUARRYBASICS®, QUARRYBASICS® Ironspot, DOWN TO EARTH®, QUARRYBASICS® XA ABRASIVE, METRO TREAD®, as manufactured by Metropolitan Ceramics, Canton, Ohio 44711. The body composition shall be of the finest shale and clays producing a uniformly dense body with slip-resisting texture. Color shall be: Size shall be: Patterns: As per drawing. Grout: Compatible color, as approved by architect. Test results shall be available upon request.

For best installation results, we recommend that the following be included in the specifications: Nominal 3/8" joint widths. Mix tile from several cartons for best shading during installation. Use beating block to embed tile and align surfaces and edges. Clean grout with grout sponge, cheese cloth or toweling for uniform grout color and most uniform grout level and texture. Grout joints may be damaged by some acid cleaners. Test a small area first. Wet floor with clean water before applying any acid cleaner. Do not use any product containing Hydrofluoric acid since it will attack both grout and tile. See our web site for complete downloadable specification information.

Test Results

By ANSI Standard Specification A137.1 Metropolitan Ceramics' unglazed tile is classified as quarry tile, however, the exceptional technical characteristics noted enable them to be used in virtually any application suitable for ceramic tile. Metropolitan Ceramics' unglazed tile meets the ASTM standards, the ANSI A137.1 specification for quarry tile, and Metropolitan internal requirements as listed.

Specification	Test	Standard	Result
Abrasion Resistance	ASTM C1243	Maximum Value of 275 mm ³	Metropolitan tests at < 275 mm ³
Absorption 5-hour boil	ASTM C373	Maximum 5%	Metropolitan tests at 3% maximum and qualities as vitreous
Breaking Strength	ASTM C648	Average ≥ 275 lbf.	Metropolitan 1/2" thick tests at 800 lbf. or better. Metropolitan 3/8" thick tests at 400 lbf. or better.
Thickness	ASTM C499	Max. range of .050"	Metropolitan meets the standard
Nominal Size	ASTM C499	The facial dimension of each tile in the sample shall not vary more than ±2.00% from the nominal dimension.	Metropolitan meets the standard
Freeze/Thaw	ASTM C1026	Observations after 300 cycles. No visible damage.	Metropolitan meets the standard
Shear Bond Strength	ASTM C482	50 P.S.I. or better	Metropolitan exceeds the standard
DCOF Acu Test (wet)	ANSI A326.3-2017 BOT 3000	No Industry Standard.	At time of manufacture, Metropolitan QUARRYBASICS® XA Abrasive tests at ≥0.70. All other Metropolitan products exceed 0.60.
Warpage	ASTM C485	Min. -1.5% Max. 1.5% along any edge. Min -1.0% Max 1.0% on either diagonal.	Metropolitan meets the standard
Wedging	ASTM C502	Min. -1.0% Max. 1.0%	Metropolitan meets the standard
Chemical Resistance	ASTM C650	As Reported	Class A Classification
Stain Resistance	ASTM C1378	As Reported	Metropolitan meets the standard

WARRANTY INFORMATION

Ironrock Capital, Inc., (Ironrock), warrants as limited below, that our products will meet the testing standards and specifications set forth in our current product literature. In the event of a defect or failure to conform to this written warranty, Ironrock Capital, Inc. will remedy shipment shortages and replace defective tile F.O.B. plant if timely notice of the defect is received by Ironrock prior to installation of the tile. Because specific installation details, structural design and environmental conditions are beyond Ironrock's control, we are not responsible for the performance of our products after they are installed except in the case of latent defects. Please see our web site for further details. www.metroceramics.com



METROPOLITAN
C E R A M I C S

Ironrock Since 1866

P.O. BOX 9240 CANTON, OHIO 44711

1.800.325.3945

EMAIL: INFO@IRONROCK.COM

WWW.METROCERAMICS.COM