



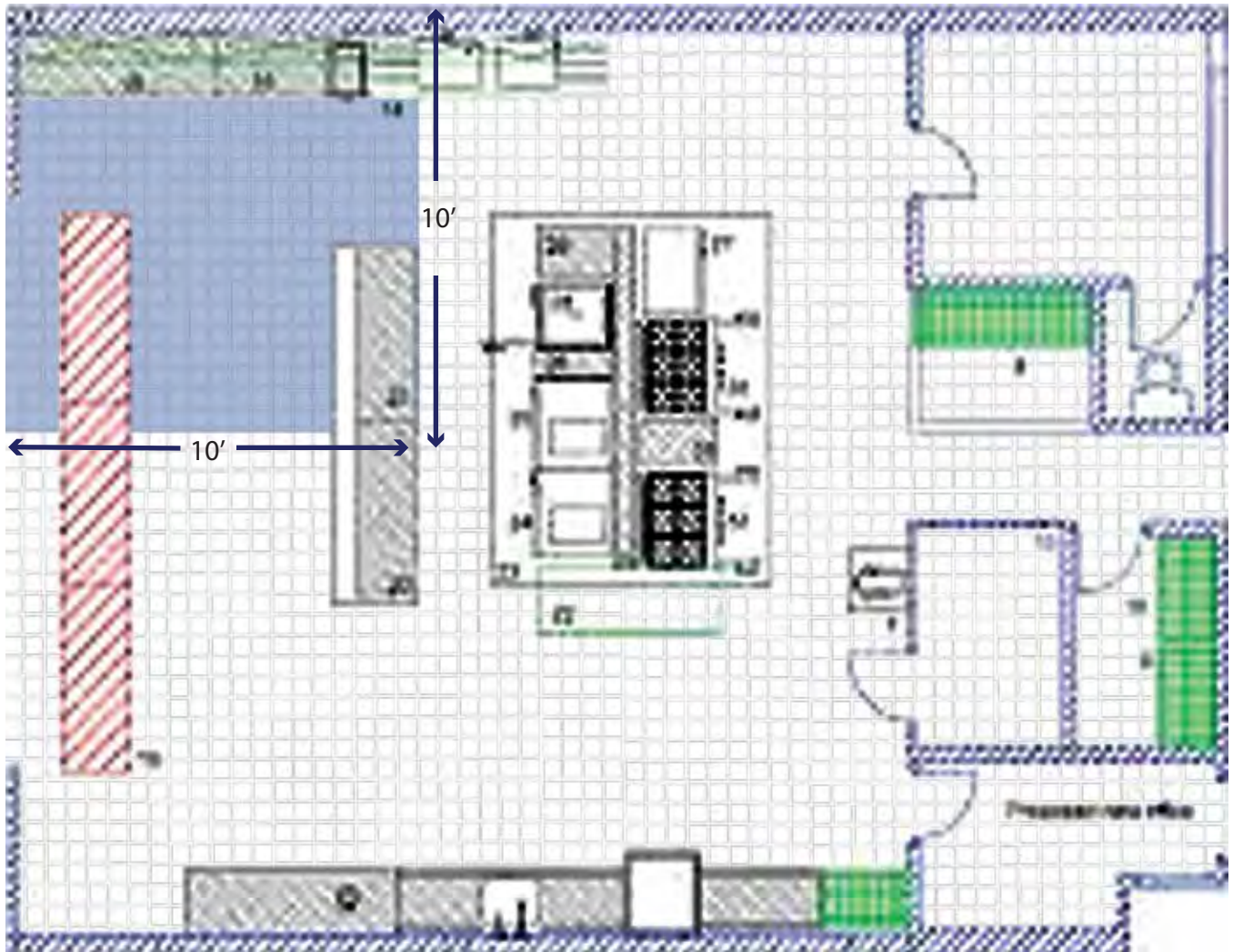
**METROPOLITAN**  
C E R A M I C S  
*Ironrock Since 1866*

## **ILLUSTRATED CARE AND MAINTENANCE FOR RESTAURANT/COMMERCIAL KITCHEN APPLICATIONS**



*The secret to a successful tile maintenance program is to begin with a clean surface. It should be the responsibility of the tile installer to thoroughly clean and remove all the grout residue and the dulling film inherent in the installation process. After initial cleanup, a period should be allowed to permit proper curing 28 days for maximum grout hardness. Prior to this period, it is recommended that the installer mop the floor with a temporary coating solution of a neutral chemical cleaner (such as Hillyard's Super Shine All), in a ratio of one part cleaner to one part water. Neutral chemical cleaners, such as Super Shine All, both clean and enhance the natural soiling resisting character of Metropolitan Ceramics tile.*

**Clean Floor in 10' x 10' Sections - Be Sure to Clean All Corners and Door Jams!**





## Equipment Needed



1. Wet floor signs

2. Broom

3. Dust pan

4. Synthetic Mop

5. Four gallon mop bucket

6. Neutral liquid cleaner - such as Hillyard Assurance

7. Squeegee

8. Deck Brush

9 Two gallon bucket

# DAILY CLEANING

## Sweep Floor



1

*Sweep entire area of floor to be cleaned with a broom. Use a dust pan to pick up dirt and debris.*

**Fill a 4 Gal.Mop Bucket with Hot Water and add 8 oz. Neutral Cleaner**



2

Fill clean mop bucket with 4 gallons of clean, hot water and add eight ounces of Hillyard Assurance® all purpose cleaner to the mop bucket. (To remove grease and stubborn stains on commercial kitchen floors, scrub floor with deck brush or use a mop with Hillyard's Assurance® add four ounces per gallon of hot water. Assurance will remove animal fats, blood, vegetable oils and other stubborn stains found in commercial kitchens. USDA approved, A4.)



## Place Wet Floor Signs



3

## Dip a Clean Synthetic Mop into the Cleaning Solution



Dip a clean synthetic mop into the cleaning solution. Wring out the mop to the point it's well saturated, but not dripping. **IMPORTANT:** Do not use the kitchen mop to clean the dining area.

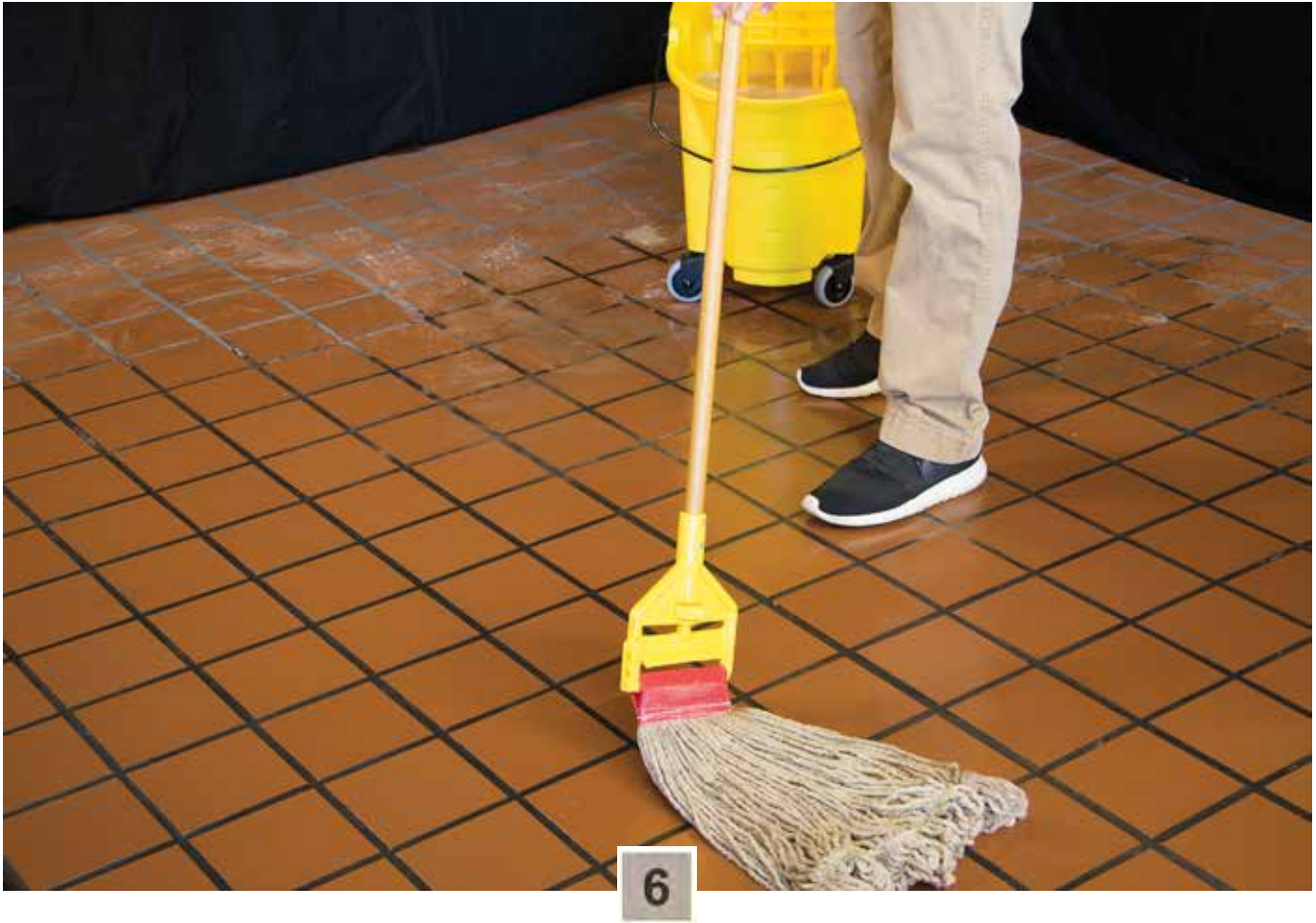
## Wring Out Mop



5



## Mop a 10'x10' Area of the Floor



Mop a 10 x 10 ft. area in a figure 8 motion. Turn mop over as one side becomes soiled.

(For the QUARRYBASICS "X" Series and QUARRYBASICS Abrasive the use of a nylon/poly looped end mop such as Whilen's Rough Rider or Haste Manufacturing Inc.'s RuFFloor Looped End Wet Mops is recommended).

**Repeat Steps 4, 5, and 6 - CLEAN THE SOLUTION AS IT DIRTIES**



*Place mop back into mop bucket, moving it up and down in the cleaning solution. Wring out excess. Mop the next 10 x 10 ft. area. Continue this same procedure until the entire floor is clean. Remember to change the cleaning solution as it becomes dirty. Be sure to clean all corners and door jams*

## **Rinse Mop, Bucket and Ringer with Cold Water**



8

**When finished, thoroughly rinse mop, bucket and wringer with clean water. Return clean equipment to proper storage area.**



## Hang Mop to Dry



9

# WEEKLY CLEANING

## Sweep Floor and Place Wet Floor Signs



*Sweep entire area of floor to be cleaned with a broom. Use a dust pan to pick up dirt and debris.*

**Fill a Two Gallon Bucket with Hot Water and 4 oz of Neutral Cleaner**



**Fill a utility bucket to the two gallon mark with hot water and add four ounces of Hillyard Assurance®.**



*Pour 1/4 of the Contents of the Bucket on the Floor*



3

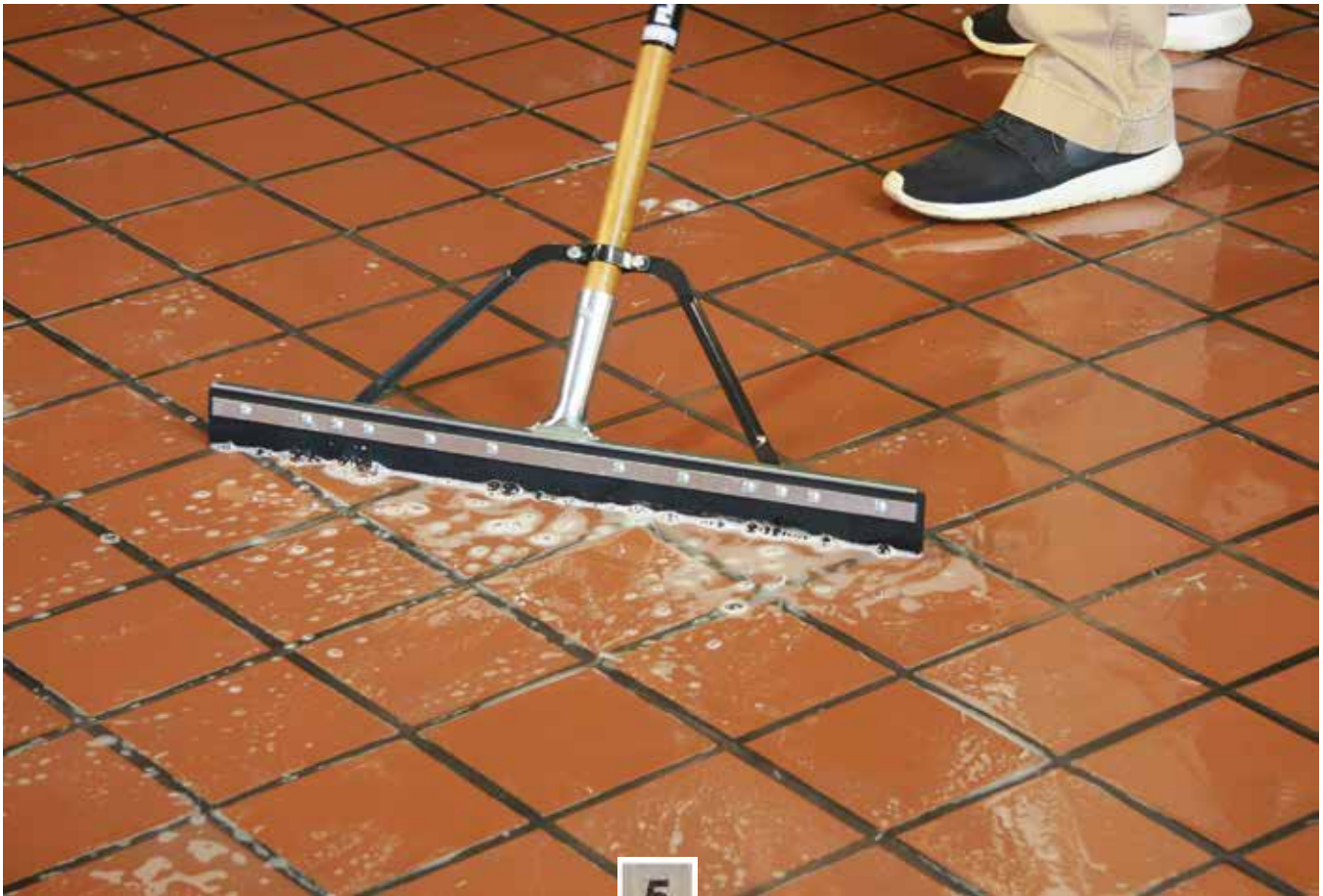
***Scrub with Swivel Scrub Brush - Paying Close Attention to Heavily Stained Areas***



4

***Scrub a 10 x 10 ft. area with the swivel scrub brush by applying downward pressure in a back-and-forth motion. Pay particular attention to the heavily stained areas and grout joints. Scrub in both directions.***

## *Squeegee Excess Water to Drain*

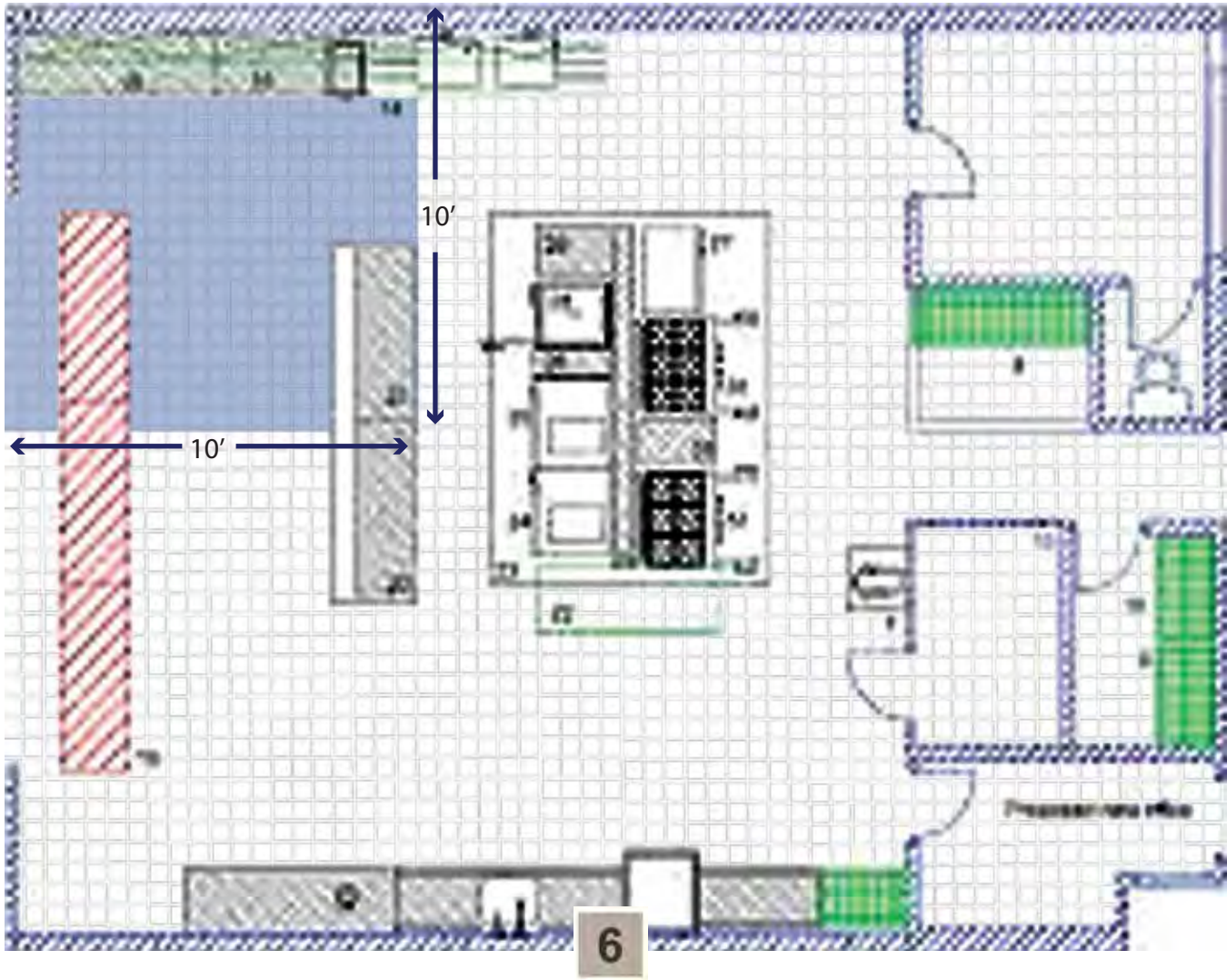


5

*After the section has been scrubbed in both directions, push the cleaning solution with the water wand (squeegee) to the nearest floor drain. NOTE: For faster results, pick up the scrubbing solution with a wet vac.*



*Scrub 10' x 10' Areas Until the Whole Floor is Clean*



**Fill a 4 Gal. Mop Bucket With Clean Hot Water**



7

## Damp Mop Rinse Each Section



*Replace dirty water as necessary.*



## Clean all Tools Thoroughly



9

Remember, you can't clean a floor with dirty equipment!

*A Clean Floor Makes Everyone Happy*



## FLOOR MAINTENANCE

*Daily and weekly floor cleaning is an important part of maintaining your Metropolitan Ceramics floor but there are additional steps you can take to make sure your floor performs at its best for years of service. Here are some of the things you can do.*

1. Always inspect the floor before cleaning for cracks in grout or tile and any loose tiles. Taking care of these problems when they are small can avoid future headaches.
2. You may choose to seal your floor using a water based penetrating sealer on both the grout and tile to help protect against staining. NEVER use a surface type sealer on Metropolitan tile. Use a water based penetrating sealer only, following the sealer manufacturers instructions. Only apply a sealer on a clean floor.
3. Never wax a Metropolitan Ceramics unglazed quarry tile floor.

